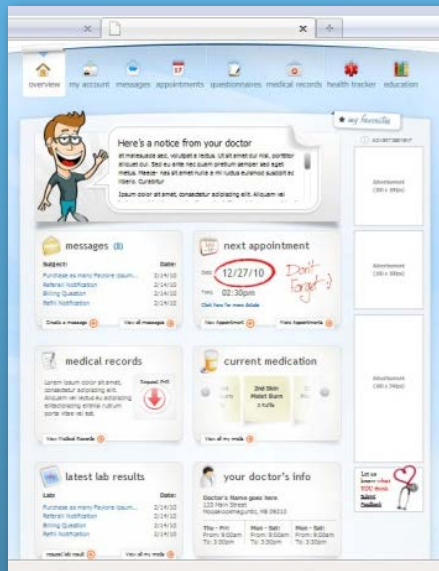


## Access your own personal Patient Portal by visiting:

<https://health.healow.com/chestnut>

or through the healow™ app available at Google Play™ or iTunes®



## PATIENT PORTAL INTERFACE

## Office Hours

Monday, Tuesday, Wednesday, Friday  
8:00am – 5:00pm

Thursday  
8:00am – 7:00pm

## Location and Contact

### Bloomington

Chestnut Family Health Center  
720 West Chestnut Street  
Bloomington, IL 61701

(309) 557-1400 phone  
(309) 557-1461 fax

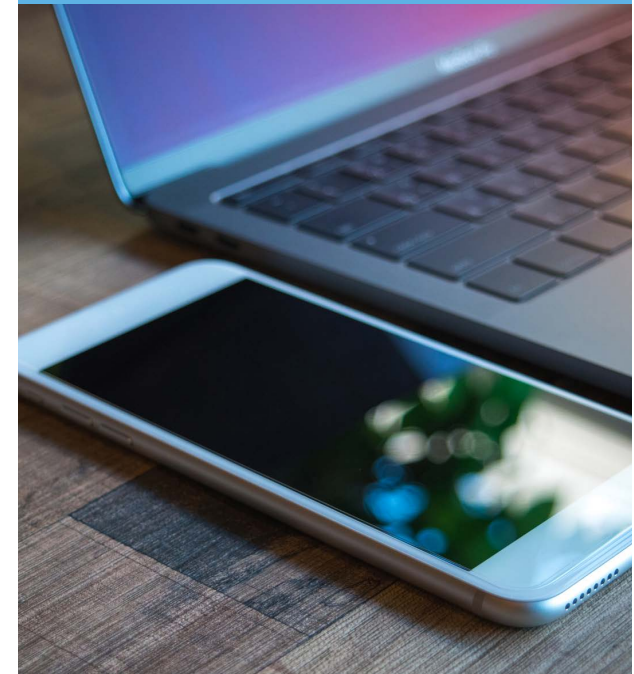
### Granite City

Chestnut Family Health Center  
50 Northgate Industrial Dr.  
Granite City, IL 62040

(618) 512-1919 phone  
(618) 512-1920 fax



[chestnut.org/cfhc](http://chestnut.org/cfhc)



## PATIENT PORTAL

Access through your computer or phone

*Know your health...  
...know yourself*

## PATIENT PORTAL

### Chestnut Family Health Center

is offering our patients secure internet access to their medical information on line, so you may view your personal health record with internet access.

Your username is your first and last name followed by all four digits of the year of your birth.

You will be given a password.

You will receive notifications on your personal email address.

## Patient Benefits

- Receive messages and appointment reminders
- Request prescription refills
- Request appointments (for non-urgent issues\*)
- View personal medical records
- Receive available educational material

***All from the comfort of your home!***

## How to Get Web-Enabled

Please provide us with a non-work/employment related email address. We can help you set your password.

Then, you can access your personal health record from a smart phone or computer with an internet connection.

**\* The Patient Portal is not intended for use in emergencies.**

**If you require urgent medical care, call 911.**

**CHESTNUT  
HEALTH SYSTEMS**  
CHESTNUT FAMILY HEALTH CENTER  
[chestnut.org/cfhc](http://chestnut.org/cfhc)

