

# 2019

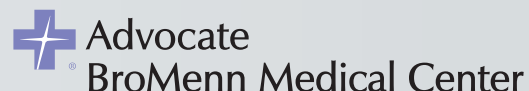
# MCLEAN COUNTY

Community Health Needs Assessment (CHNA)

---

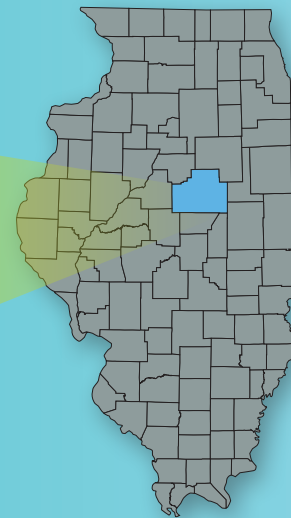
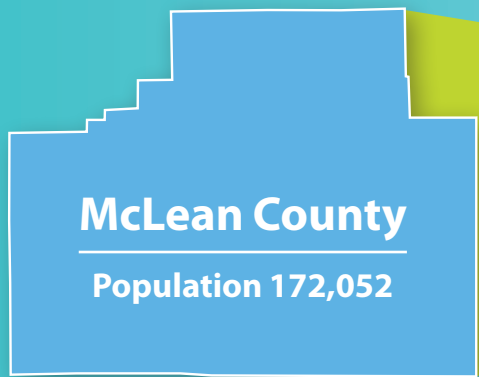
# SUMMARY REPORT

---



together **WE** are better

# HIGHER LEVEL COUNTY DATA



McLean County

State of Illinois

33.7

MEDIAN AGE

38.5

Approx 25%

SINGLE PARENT HOUSEHOLDS

32.4%

40.5%

(Bloomington, 61701)

66,336

(2.43 average household size)

HOUSEHOLDS



\$67,065

(Bloomington, 61701 \$47,846)

MEDIAN HOUSEHOLD INCOME

\$66,487

14.5%

(Bloomington, 61701 22.2%)

PEOPLE LIVING BELOW FEDERAL POVERTY LINE



3.73%

UNEMPLOYED

6.7%

# VOICES FROM THE COMMUNITY

## 2018 MCLEAN COUNTY COMMUNITY HEALTH SURVEY

- **695 respondents**  
(593 general population + 102 at-risk population)
- **2 month survey period**  
(July – August 2018)



### PERCEPTION OF FIVE BIGGEST HEALTH ISSUES IN OUR COMMUNITY

- Mental Health **82%**
- Obesity/Overweight **52%**
- Aging Issues **31%**
- Cancer **27%**
- Dental Health **25%**

### PERCEPTION OF THREE UNHEALTHIEST BEHAVIORS

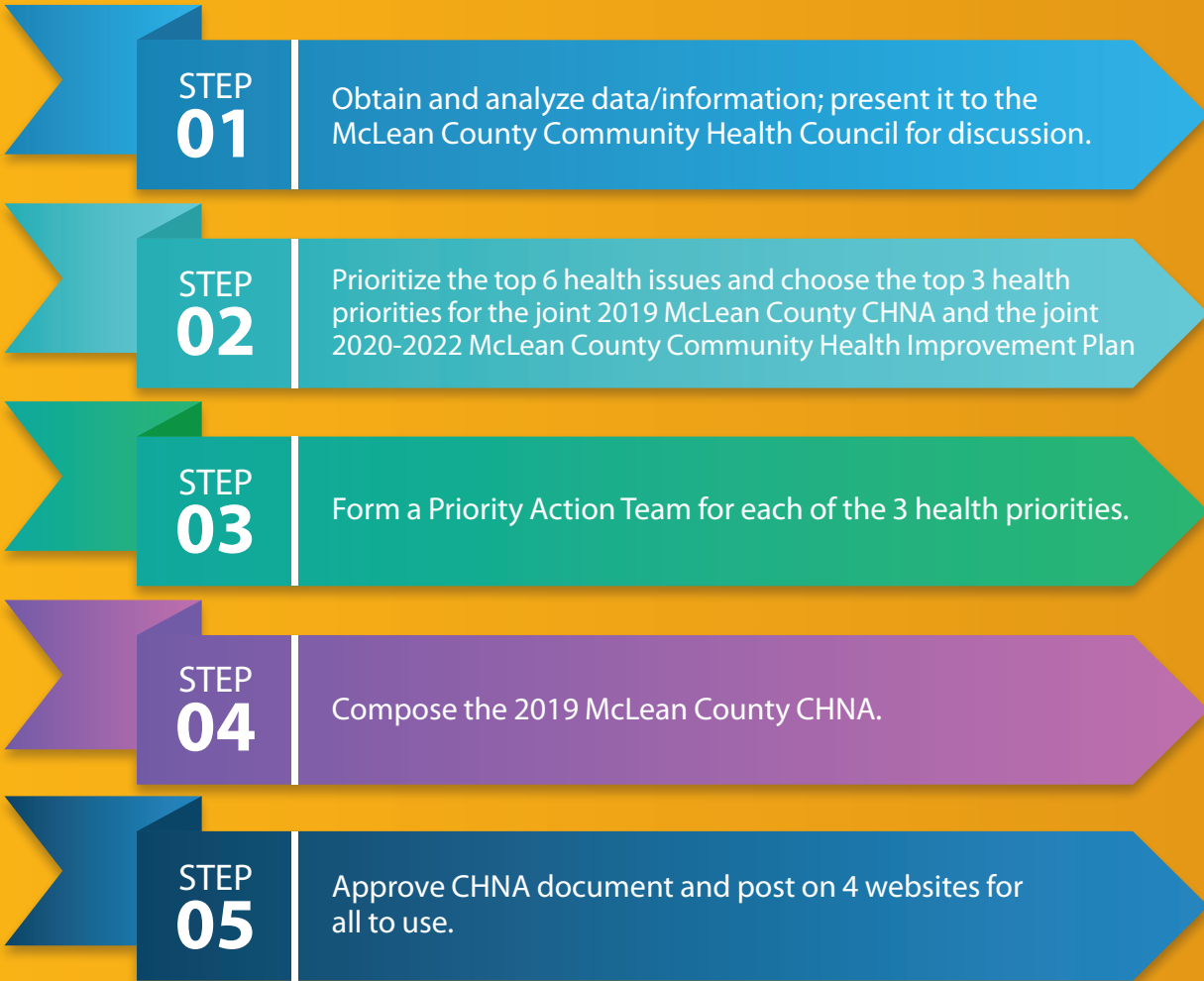
- Drug abuse - illegal **52%**
- Alcohol abuse **42%**
- Poor eating habits **38%**

### THREE MOST IMPORTANT FACTORS THAT WOULD IMPROVE WELLBEING

- Access to Health Services **59%**
- Healthy Food Choices **43%**
- Job Opportunities **40%**

# GENERAL OVERVIEW

## OVERVIEW OF THE COMMUNITY HEALTH NEEDS ASSESSMENT (CHNA) PROCESS



### Top 6 Issues

- Access to Care
- Behavioral Health (Mental Health and Substance Use)
- Healthy Eating/Active Living (Exercise, Nutrition, Obesity and Food Access/Insecurity)
- Heart Disease
- Oral Health
- Respiratory Disease



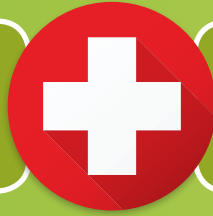
### Top 3 Issues Identified as Priority Focus Area

- Access to Care
- Behavioral Health (Mental Health and Substance Use)
- Healthy Eating/Active Living (Exercise, Nutrition, Obesity and Food Access/Insecurity)

# BEHAVIORAL HEALTH

McLean County is in the worst 25th percentile compared to other counties in Illinois for:

ER visits due to adolescent (10-17 years) suicide and intentional self-inflicted injury



ER visits due to alcohol use (18+ years)

McLean County is in the **best 50th percentile** compared to other counties in Illinois for:

- ER rate due to substance use
- ER rate due to opioid use
- Deaths due to drug poisoning
- Adults who smoke
- Teens who use marijuana, smoke or use alcohol



- An average of **31%** of youth surveyed reported feeling sad or hopeless
- An average of **16%** of youth surveyed reported seriously considering attempting suicide

- McLean County is in the worst 50th - 75th percentile for age-adjusted ER visits due to pediatric (<18) mental health compared to other counties in Illinois.
- 70% of McLean County adults surveyed rated their mental health as average or poor
- Rate for 15-17 year olds is 2.5 times the county rate



**59%** of survey respondents rated  
**“ACCESS TO HEALTH SERVICES”**  
as an issue that impacts well-being



**REASONS** survey respondents reported not accessing health care were:

- **COULD NOT AFFORD COPAY**
- **NO INSURANCE**

**19%** of survey respondents reported not having access to dental care



**19%** of at-risk County residents surveyed reported that the **EMERGENCY DEPARTMENT** was their primary choice of medical care...

...as compared to **3%** of the general population

**McLean County is ranked as #1 in the State of Illinois for clinical care**

## HEALTHY EATING / ACTIVE LIVING (HEAL)



- **86%** of McLean County residents are not meeting exercise guidelines (150 minutes per week); **35%** report being too tired to exercise, **22%** report they don't like to exercise
- **94%** of McLean County residents do not consume 5+ servings of fruit and vegetables per day; **11%** citing cost, **15%** report "don't like"
- **12.1%** of people in McLean County experience food insecurity
- **32.1%** of adults (18+) are obese
- **27%** of 8th, 10th and 12th graders reported being physically active for a total of 60 minutes per day for 7 days a week
- McLean County is in the **worst 25th percentile** compared to other IL counties for access to a grocery store
- **84%** of McLean County residents live reasonably close to a park or recreation facility



# SUMMARY PAGE

## MCLEAN COUNTY COMMUNITY HEALTH COUNCIL MEMBERS



100 Black Men  
Advocate BroMenn Medical Center  
Baby Fold  
Bloomington Housing Authority  
Bloomington Normal Boys & Girls Club  
Bloomington Police Department  
Bloomington Township  
Chestnut Health Systems  
Children's Home + Aid  
City of Bloomington  
Community Cancer Center  
Community Health Care Clinic  
Connect Transit  
District 87  
East Central Illinois Area Agency on Aging  
Economic Development Council  
Faith in Action  
Heartland Head Start  
Home Sweet Home Ministries  
Illinois Farm Bureau  
Illinois State University  
Illinois State University Mennonite College of Nursing  
Illinois State University School of Social Work  
Links  
Marcfirst SPICE  
McLean County Government  
McLean County Center for Human Services  
McLean County Health Department  
McLean County Regional Planning Commission  
McLean County Sheriff  
Mid Central Community Action  
Normal Police  
OSF HealthCare St. Joseph Medical Center  
Project Oz  
Not in Our Town  
Regional Office of Education  
State Farm  
Unit 5  
United Way of McLean County  
West Bloomington Revitalization Project  
YWCA

Summary data is from the 2019 McLean County Community Health Needs Assessment full report.